

The hospital-sector in the Ruhrgebiet: how quick is the restructuring?

Boris Augurzky, Markus Scheuer, RWI

XVIII. International RESER Conference
**“New horizons for the role and production of
services”**

September 25th-26th 2008, Stuttgart,

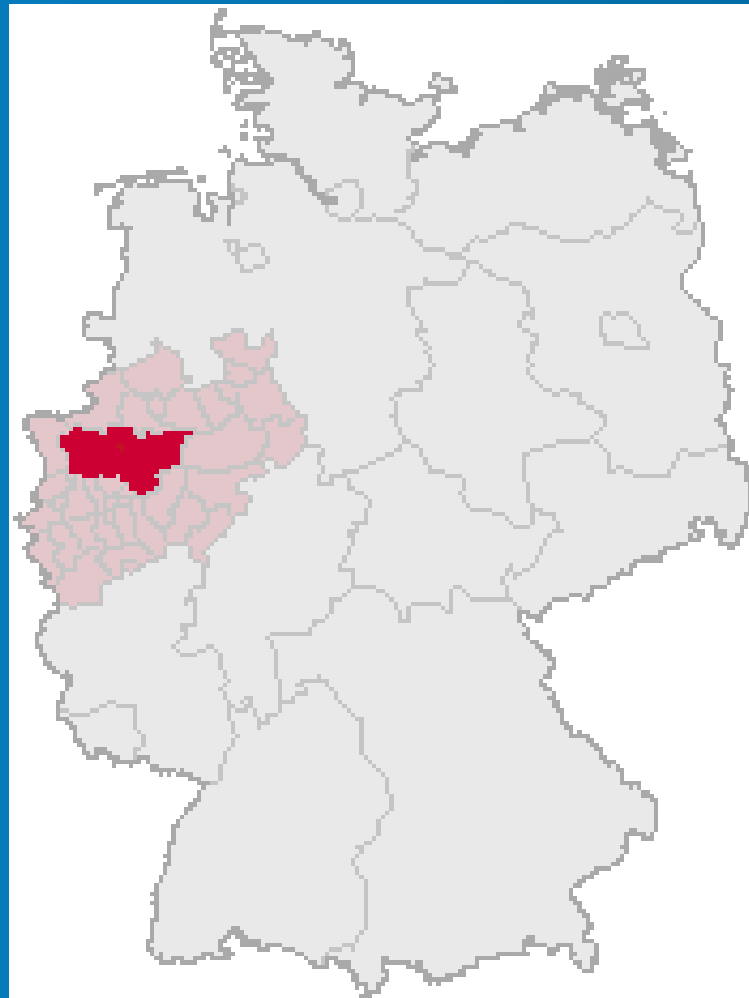


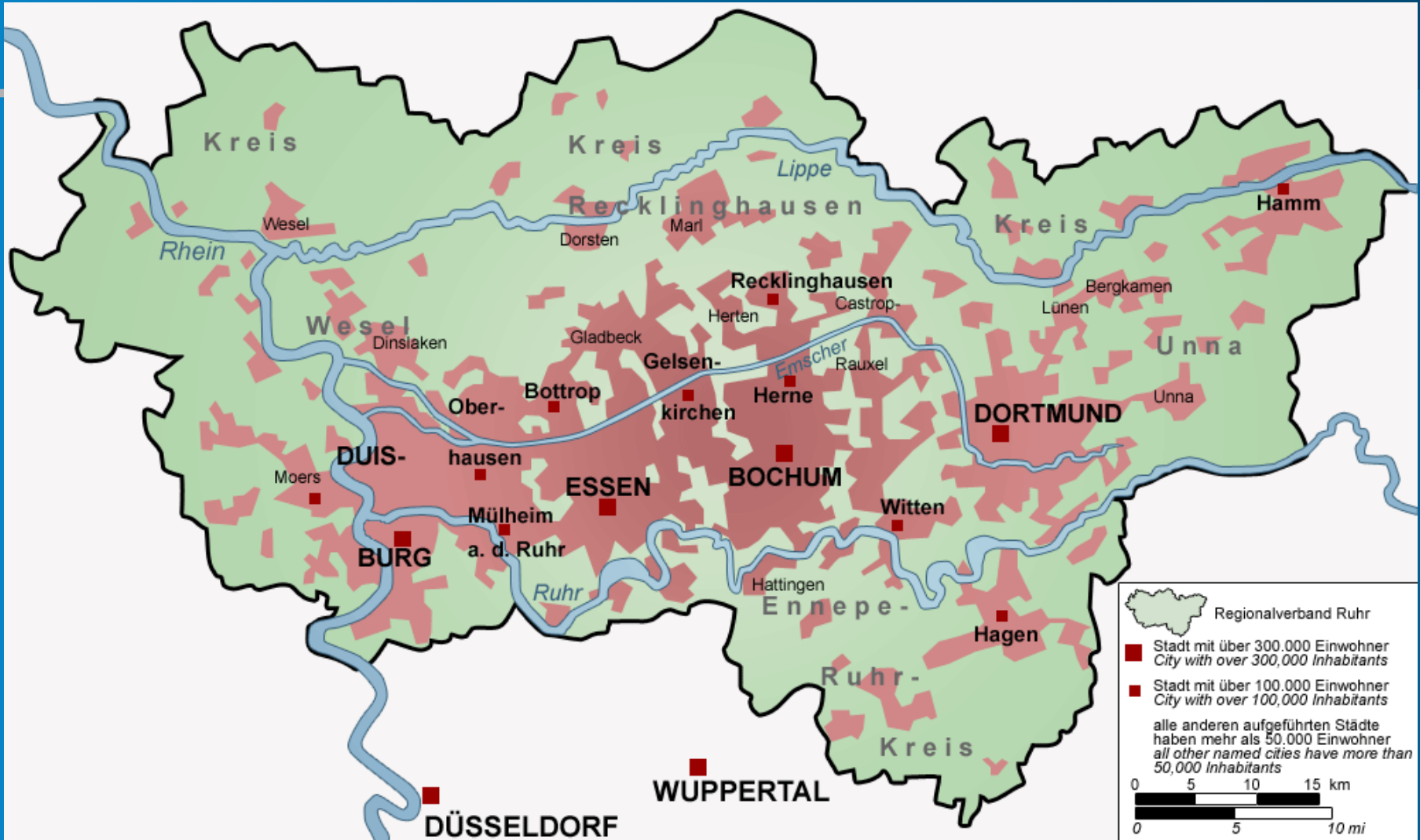
Research Questions

- ① How quick is the process of restructuring in the hospital sector under the pressure of tightening financial constraints and the introduction of DRG?
- ① Are there differences between the old industrial region of the Ruhrgebiet and the German federal state of North-Rhine Westphalia in which it is located?



Location of the Ruhrgebiet in NRW





Kreis

Kreis

Recklinghausen

Kreis

Hamm

Rhein

Wesel

Lippe

Dorsten

Marl

Recklinghausen

Bergkamen

Lünen

Wesel

Dinslaken

Gladbeck

Gelsen-

Herne

Castrop-

Unna

Ober-

Bottrop

kirchen

Herne

DORTMUND

Unna

DUIS-

hausen

ESSEN

BOCHUM

Witten

Moers

Mülheim

a. d. Ruhr

BURG

Ennepe-

Hagen

Ruhr

Hattingen

Ruhr-

Kreis

WUPPERTAL

DÜSSELDORF

Population Ruhrgebiet

- ① 5. 36 million (Slovak Republic 5.4; FIN 5.2)
- ① Paris: 2.2 million (centre), 10 million (Unité Urbaine)
- ① London 7.5 million (centre), 12.6 million (Metropol Region),
- ① Ruhr: 1,200 persons per km²
- ① Ruhr: 11 % foreigners (half of them Turkish)
- ① Ruhr: Age above NRW average
- ① Ruhr: Decline in population since beginning of coal and steel crisis

Population NRW

- ① NRW: 18 million inhabitants
- ① Netherlands (16 million inhabitants)
- ① Greece (11 million inhabitants)
- ① Czech Republic, Portugal and Hungary (all 10 million inhabitants)
- ① Sweden (9 million inhabitants)

Problems

- ① Rate of employment below average
- ① Growth of employment below average
- ① Rate of self-employment below average
- ① Rate of unemployment especially long-term unemployment above average
- ① Decline in number of highly-qualified jobs

Data Base

- ① Comparison of data from Hospital Quality Reports 2006 and 2004
- ① Quality Reports (Qualitätsberichte): legal situation, size by beds and patients served, technical equipment, specialisation regarding diseases treated

Structure of the hospital sector (1): number of hospitals

- ① (Share of potential patients = share of population Ruhr/NRW: 29.2 % in 2006)
- ① Regular Hospitals for acute Cases: Ruhr 110 of 355 = 31 % (2004)
- ① 2004 to 2006: 8 hospitals closed in NRW of which 3 in the Ruhr area = 30.8 % (2005)

Structure of the hospital sector (2): type of ownership

- ① Church-owned hospitals: Ruhr 86 %, NRW 76 %
- ① Public hospitals: Ruhr 10 %, NRW 17 %
- ① Private for-profit hospitals: Ruhr 4 %, NRW 8 %

Structure of the hospital sector (2): type of ownership

- ① Church-owned hospitals: Ruhr 86 %, NRW 76 %
- ① Public hospitals: Ruhr 10 %, NRW 17 %
- ① Private for-profit hospitals: Ruhr 4 %, NRW 8 %

Structure of the hospital sector (3): number of beds

- ① Regular hospital-beds (without day care psycho-treatments and rehabilitation):
Ruhr 34.5 (04: 34.2) %
- ① NRW: 2004 – 2006: - 3,346 beds
(-2.9 %)
- ① Ruhr: 2004 – 2006: - 819 beds
(-2.1 %)

Structure of the hospital sector (4): Qualified personnel - doctors

- ① Doctors employed: Ruhr 32.2
(04: 33.4) %
- ① NRW: 2004 – 2006: - 1841 doctors
(- 10.4 %)
- ① Ruhr: 2004 – 2006: - 894 doctors
(- 7.1 %)

Structure of the hospital sector (5): Qualified personnel - nurses

- ① Qualified Personnel employed in care:
Ruhr 33.5 (04: 32.9) %
- ① NRW: 2004 – 2006: - 8,856 nurses
(- 10.9 %)
- ① Ruhr: 2004 – 2006: - 2,479 nurses
(- 9.3 %)

Structure of the hospital sector (6): medical academia

- ① Universities and university teaching hospitals:
Ruhr 33 of 109 in NRW
- ① = 30.3 %
- ① Unchanged 2004 - 2006

Structure of the hospital sector (7): Patients

- ① Patients in stationary Care: Ruhr 32.9 % (04: 32.6 %)
- ① Patients in stationary Care/bed: Ruhr 31.7 (04: 32.5), NRW 34.3 (04: 34.0) %
- ① Patients in stationary Care/Doctors employed: Ruhr 156 (04: 147), NRW 158 (04: 150)
- ① Patients in stationary Care/nurses: Ruhr 49.8 (04: 47.3), NRW 52.4 (04: 47.7) %

Conclusions (1)

- ① Indicators of hospital sector in the Ruhrgebiet slightly above the share of the region of the potential patients in NRW measured by the population
- ① Reason: average age of the population higher?

Conclusions (2)

- ① Future over-supply regarding expected population loss?
- ① But further aging of the Ruhrgebiet
- ① Influence of DRG on private non-profit and public hospitals?

Conclusions (3)

- ① Regarding the very short period studied (2004 – 2006) remarkable adaption to financial pressures
- ① Downsizing much more in „flexible“ factors of employment of doctors and nurses...
- ① than in more rigid factors like hospitals and beds
- ① Effects on the quality of treatment and care?

Conclusions (4)

- ① Nevertheless:
- ① The health services sector: the sector with the highest growth dynamic and the largest share in employment
- ① 300,000 people employed in the health sector of the Ruhrgebiet (16% of total employment)
- ① Estimates: additional growth of jobs of 55,000 until 2010

Conclusions (5)

- ① The health sector and especially the hospital sector seems to remain one of the most interesting parts of the service economy in the foreseeable future
- ① Why don't we try to build an international network of researchers working on the issue inside of RESER?



Thank you very much!
